

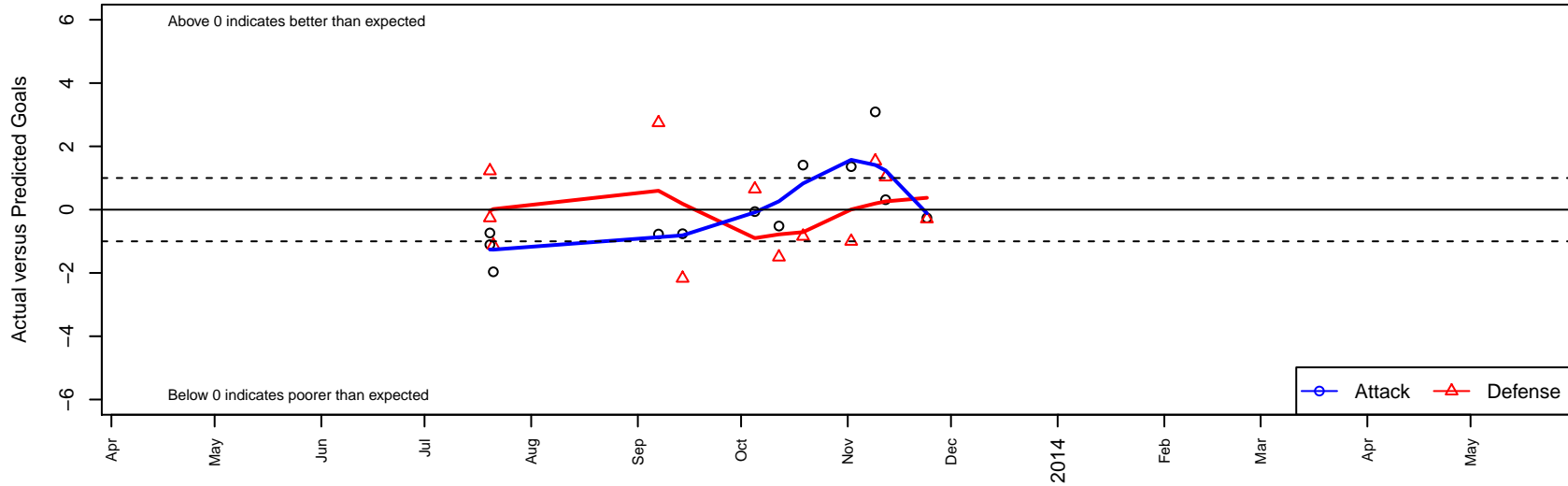
# Ballistic United SC Premier B95

, CAN  
 B95 total strength=1866  
 attack=65.23 defense=24.81  
 fall league = NorCal NPL P1 State Premier 1 U  
 alt names used:  
 BALLISTIC UNITED SC BUSC 96 PREMIER

Venues played:  
 Albion Cup Showcase U19  
 NorCal NPL P1 State Premier 1 U19



**Ballistic United SC Premier B95**  
 Dots are actual minus expected GF (blue circles) and GA (red triangles).  
 Blue line is smoothed change in attack strength. Red is smoothed change in defense strength.



	<b>date</b>	<b>home</b>		<b>away</b>		<b>venue</b>	<b>pred.home</b>	<b>pred.away</b>
19504	2013-11-24	Palo Alto SC 96 White B95	2	Ballistic United SC Premier B95	3	NorCal NPL P1 State Premier 1 U19	1.70	3.26
18316	2013-11-12	Santa Clara Sporting Green B95	2	Ballistic United SC Premier B95	1	NorCal NPL P1 State Premier 1 U19	3.03	0.68
17981	2013-11-09	Ballistic United SC Premier B95	6	Juventus SC Premier B94	0	NorCal NPL P1 State Premier 1 U19	2.91	1.54
17110	2013-11-02	Merced Atlas Academy B94	3	Ballistic United SC Premier B95	6	NorCal NPL P1 State Premier 1 U19	2.00	4.64
15221	2013-10-19	Ballistic United SC Premier B95	3	Mustang SC Hotspur B95	2	NorCal NPL P1 State Premier 1 U19	1.59	1.16
14233	2013-10-12	Tri Valley SC Arsenal B94	4	Ballistic United SC Premier B95	2	NorCal NPL P1 State Premier 1 U19	2.50	2.52
13173	2013-10-05	Almaden FC Real B95	1	Ballistic United SC Premier B95	1	NorCal NPL P1 State Premier 1 U19	1.65	1.06
10344	2013-09-14	Ballistic United SC Premier B95	1	Diablo FC B95	4	NorCal NPL P1 State Premier 1 U19	1.76	1.83
9379	2013-09-07	Ballistic United SC Premier B95	1	Bay Oaks SC Mavericks B95	0	NorCal NPL P1 State Premier 1 U19	1.77	2.75
4405	2013-07-21	San Diego Surf SC Academy I B94	2	Ballistic United SC Premier B95	1	Albion Cup Showcase U19	0.88	2.96
4067	2013-07-20	SC Del Sol Armstrong B94	2	Ballistic United SC Premier B95	0	Albion Cup Showcase U19	3.23	1.11
4070	2013-07-20	American Canyon Atletico Chelsea B94	1	Ballistic United SC Premier B95	0	Albion Cup Showcase U19	0.74	0.74